

A vertical collage of 15 images illustrating the manufacturing process of a mechanical part, arranged in a circular pattern. The images are as follows:

- 1. 3D CAD model of a mechanical part.
- 2. 3D CAD model of a mechanical part.
- 3. 3D CAD model of a mechanical part.
- 4. 3D CAD model of a mechanical part.
- 5. 3D CAD model of a mechanical part.
- 6. 3D CAD model of a mechanical part.
- 7. 3D CAD model of a mechanical part.
- 8. 3D CAD model of a mechanical part.
- 9. 3D CAD model of a mechanical part.
- 10. 3D CAD model of a mechanical part.
- 11. 3D CAD model of a mechanical part.
- 12. 3D CAD model of a mechanical part.
- 13. 3D CAD model of a mechanical part.
- 14. 3D CAD model of a mechanical part.
- 15. 3D CAD model of a mechanical part.

V00



09/01/19

Copyright, 2019 By Ramazan OFLAZ

CHOCOLATE BALL MILL

BCM200-HL

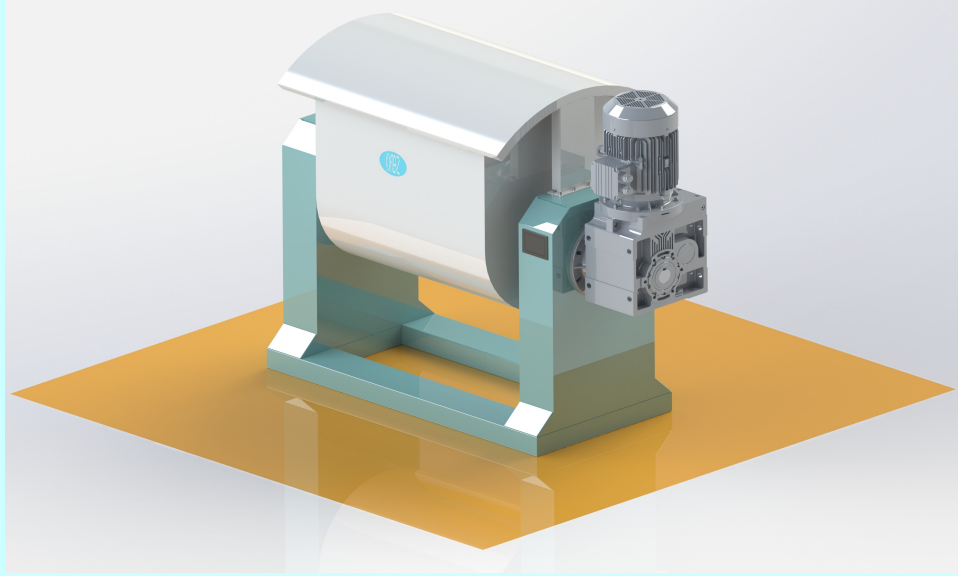


Capacity : 200 kg / batch
Main Agitator Power : 15 kW
Chocolate Pump Power : 1.5 kW
Ball Size : 3/8 Inches
Ball Amount : 200 kg
Ball Hardness : 63 Hrc
Equipped with Built-in Heat Exchanger
Equipped with Built-in Jacket Water Circulation Pump
Built with touch screen
Possibility to save 10 different recipe
Mixing Tank Complete AISI 304 Stainless Still
Chasis Electrostatically Painted Mild Steel
Equipped with jacked two and three way valves
Equipped with frequence convertors for both main agitator and chocolate pump
Possibility to use both automatically and manually
Operator consent on each step
Built-in Air Circulating Fan to remove the belt smell

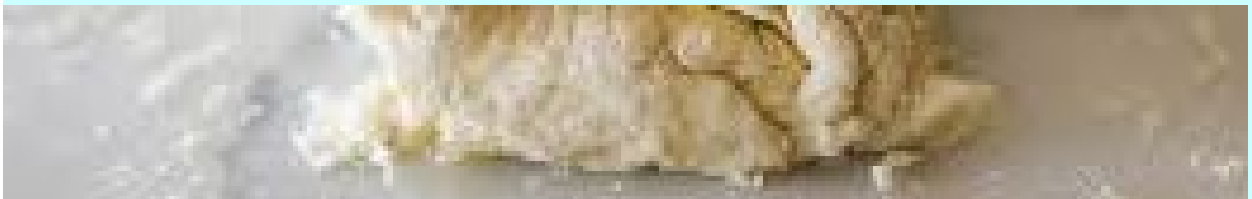


Z-MIXER

ZM300S-BL



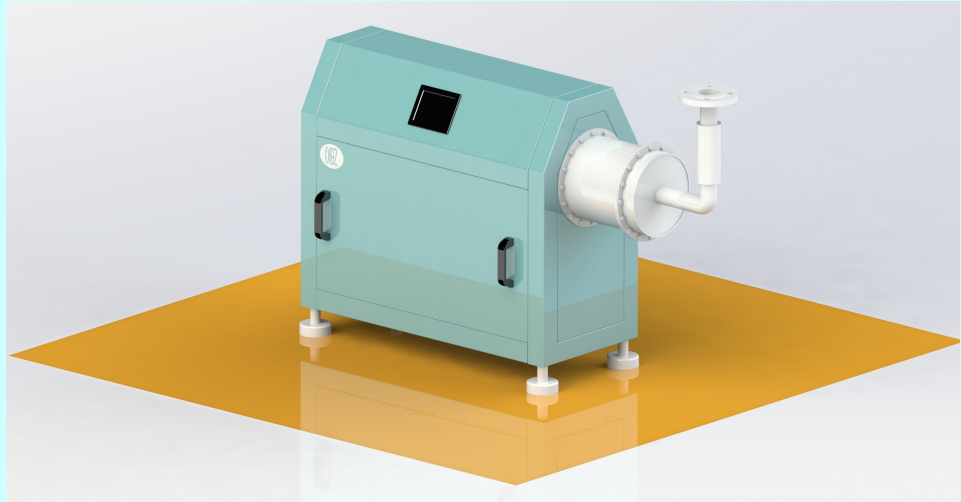
Capacity : 300 liters
Number of Z Type Mixing Blades : One
Main Agitator Power : 15 kW
Discharging Motor Power : 0.55 kW
Motors And Reducers : Yilmaz, Gamak, Watt
Mixing Bowl complete AISI 304 Stainless Steel
Mixing Bowl is Jacketed for cold water
Adjustable Agitator Speed
Chasis is made of mild steel and painted.
Fixed top guard for easy adaptation for automatic charging
Strong and Robust Chasis
Bearings are SKF, FA



AERATING

MIXER

HM200-BL



Capacity : 200 kg/h
AISI 304 Stainless Steel Chasis
All food contact parts are AISI 304 stainless steel
2,2 kW, 900 rpm main agitator
Main agitator is equipped with frequency converter for speed adjustment
Jacketed for chilling water
Touch Panel with PLC control
Pressure sensor to avoid any damage in case of a unintended pressure increase
0,75 Frequency converter for cream feeding pump
Electrical Equipments Schneider, Omron, GMT

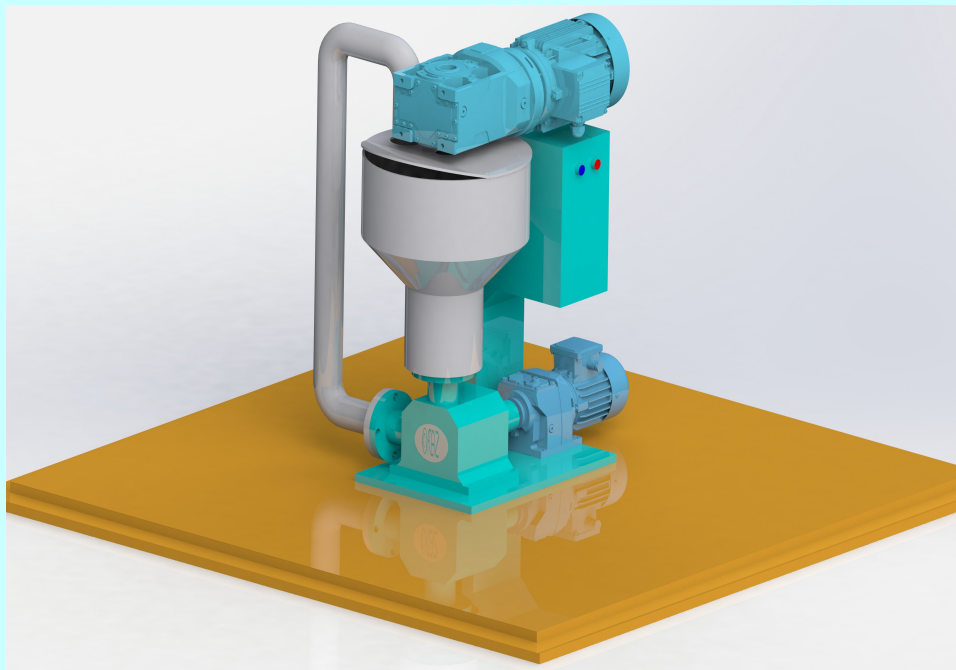


LAB TYPE

CHOCOLATE

BALL MILL

BCM5-LAB



Capacity : 5 kg / Batch

Main Agitator Power : 1.5 kW

Chocolate Pump Power : 0.12 kW

Ball Size : 3/8 Inches

Ball Amount : 5 kg

Ball Hardness : 63 Hrc

Equipped with Built-in Heat Exchanger

Equipped with Built-in Jacket Water Circulation Pump

Mixing Tank Complete AISI 304 Stainless Still

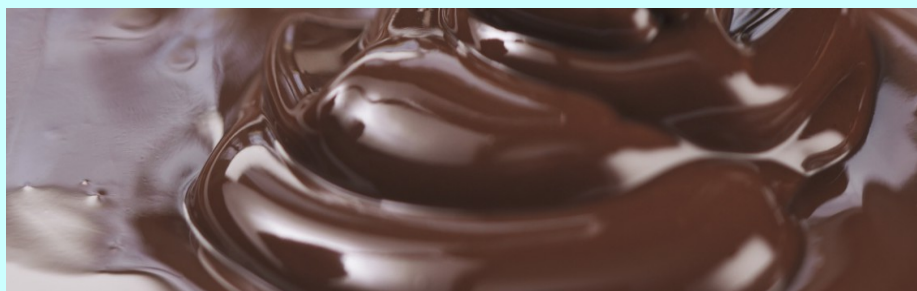
Chasis Electrostatically Painted Mild Steel

Equipped with frequency convertors for both main agitator and chocolate pump

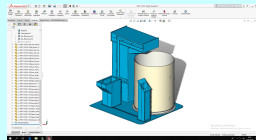
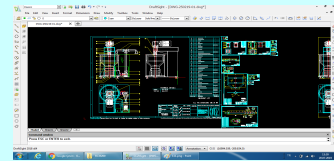
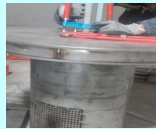
Possibility to use both automaticaly and manually

Built-in Air Circulating Fan to remove the belt smell

Electrical Equipments Schneider, Omron, GMT



... Oflaz, Your support on site ...



Designed By : Oflaz Confectionery and Bakery Equipments
Drawn By : Oflaz Confectionery and Bakery Equipments
Manufactured By : Oflaz Confectionery and Bakery Equipments
Company Name : Oflaz Confectionery and Bakery Equipments
Company Address : Organize San. Bolgesi 2. Cd. C Blok
No:13CE Isgem / Merkez / Karaman
Email : oflaz@oflaz.info
Phone : + 90 338 213 00 88
Made In : TURKEY

WARNING !

This document is the property of Oflaz Confectionery and Bakery Equipments and cannot be copied or published completely or partially without his written consent.